

Benennung:

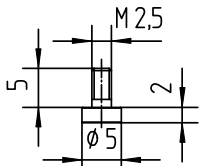
Messeinsätze

contact tips

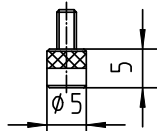
Zeichnungs-Nr.:

8658 ZA

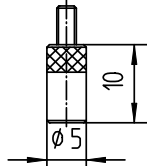
Sachnummer: 8658 ZA



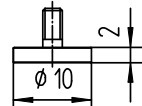
8658 A2



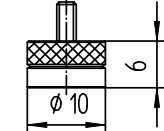
8658 A5
8658 A5 H*



8658 A10
8658 A10 H*

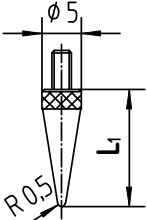


8658 G2
8658 G2 H*

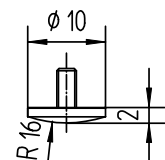


8658 G6
8658 G6 H*

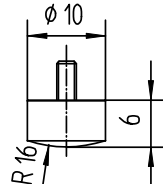
L ₁
5
10
15
20
30
40
50



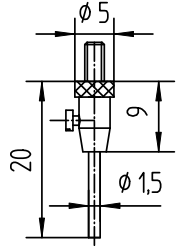
8658 R L₁



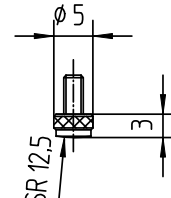
8658 D2



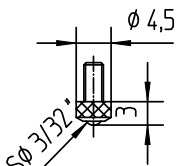
8658 D6



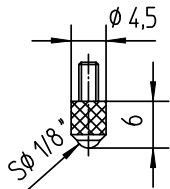
8658 I
8658 I H*



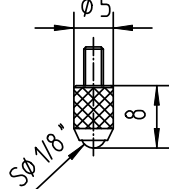
8658 F3 H*



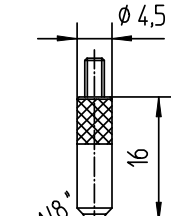
8658 B3



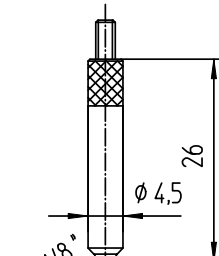
8658 B6
8658 B6 R*
8658 B6 S**
8658 B6 H***



8658 B8
8658 B8 H*

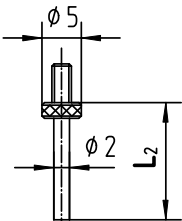


8658 B16
8658 B16 H*

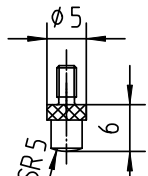


8658 B26
8658 B26 H*

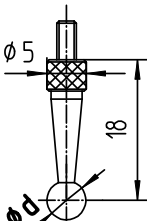
L ₂
5
10
15
20



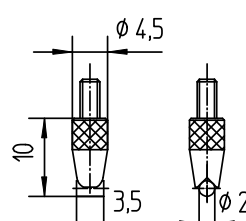
8658 J L₂



8658 M
8658 M H*

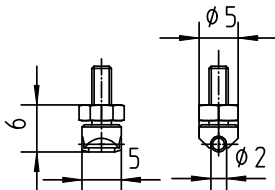


8658 K d H*

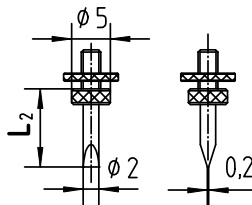


8658 L10

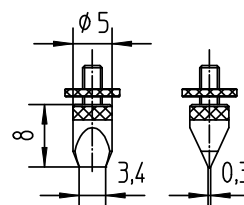
d
1
2
3
4
5
6
7
8
9
10
11
12



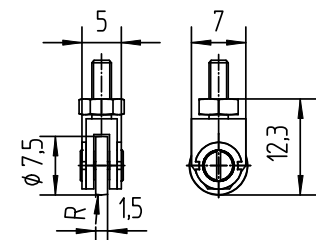
8658 L H*



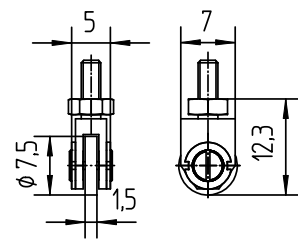
8658 S L₂



8658 T8
8658 T8 H*



8658 U B



8658 U F

*Hartmetall
*tungsten carbide

**Rubin
**rbinium

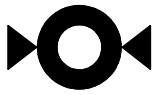
***Saphir
***sapphire

Copyrights by Kordt GmbH & Co. KG.

Schutzvermerk nach DIN 34-1 beachten

KORDT
GERMANY

Datum	Name	Maßstab 1:1	Allgemeintoleranzen ISO 2768-mK	Blatt 1
Bearb. 15.12.06	Rechner	Format A4 ZA	CAD OneSpace Designer	1 Bl.
Artikel-Gruppe	MNT	(Ers.f.)	(Ers.d.)	



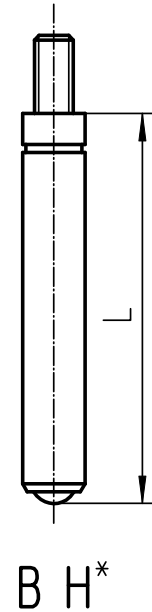
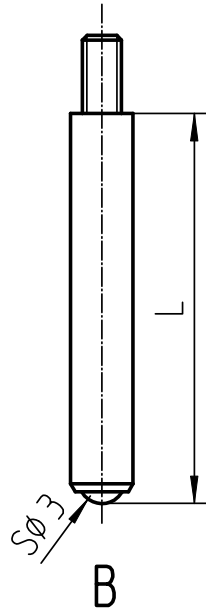
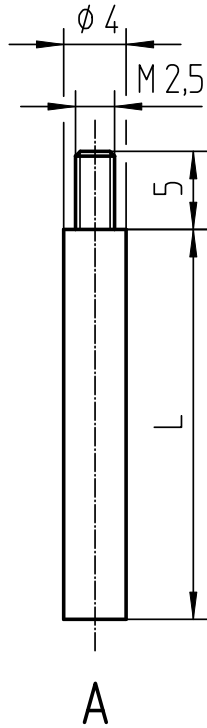
Benennung:

Messeinsatz
contact tip

Zeichnungs-Nr.:

8656 ZA

Sachnummer: 8656



L
5
10
15
20
25
30
40
55
70
85
100

Bezeichnung:
designation:

Messeinsatz 8656 B 25

Länge L
length L

Ausführung
version

Typ-Nr.
type no.

Benennung
nomination

* Hartmetall
tungsten carbide

Schutzvermerk nach DIN 34-1 beachten Copyrights by Kordt GmbH & Co. KG.

KORDT
GERMANY

Datum	Name	Maßstab 2:1	Allgemeintoleranzen ISO 2768-mK	Blatt 1
Bearb. 29.08.06	Rechner	Format A4 ZA	CAD OneSpace Designer	1 Bl.
Artikel-Gruppe	MNT	(Ers.f.)	(Ers.d.)	