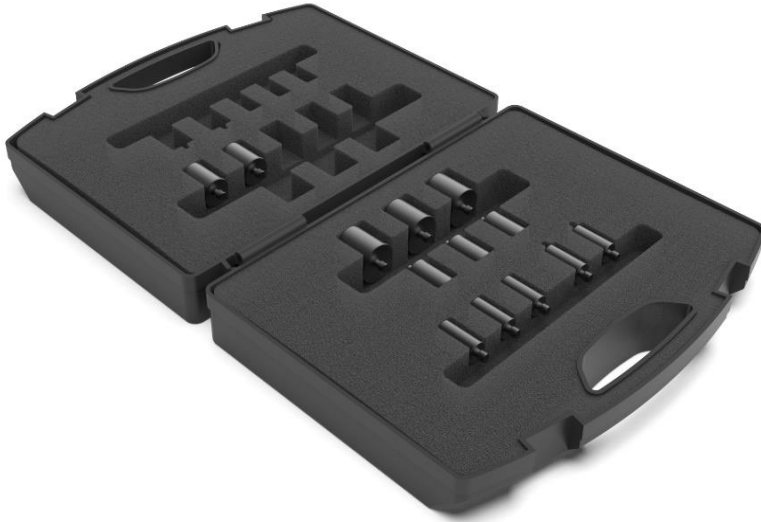


Kit-Nr.:

R-M-SET-BSC-6

Beschreibung:

M6 Basic magnet set



Part Number	Description	Quantity
R-M-13-6	Ø12.7 mm × 25.0 mm magnetic stanc	3
R-M-19-6	Ø19.1 mm × 25.0 mm magnetic stanc	3
R-M-25-6	Ø25.4 mm × 25.0 mm magnet	3
R-MP-13-6	Ø12.7 mm × 25.0 mm pin magnet	2