



# SHUB10-0ZA87010

SHub

MOTOR FEEDBACK SYSTEMS

**SICK**  
Sensor Intelligence.



Illustration may differ



### Ordering information

Type	part no.
SHUB10-OZA87010	1107310

Other models and accessories → [www.sick.com/SHub](http://www.sick.com/SHub)

### Detailed technical data

#### Features

<b>Items supplied</b>	Cable (part number: 2115196) included with delivery
-----------------------	---

#### Safety-related parameters

<b>MTTF<sub>D</sub> (mean time to dangerous failure)</b>	140 years (EN ISO 13849) <sup>1)</sup>
--	--

<sup>1)</sup> This product is a standard product and does not constitute a safety component as defined in the Machinery Directive. Calculation based on nominal load of components, average ambient temperature 60°C, frequency of use 8760 h/a. All electronic failures are considered hazardous. For more information, see document no. 8015532.

#### Performance

<b>Position</b>		
	Measurement principle	Acceleration sensor
<b>Vibration</b>		
	Measuring range	± 50 g
	Bandwidth	10 kHz
	Resolution	13 bit
	Measuring step	24.4 mg / digit
	Maximum sample rate	32 kS/s, synchronous to position sampling of the EDS/EDM35
	Signal noise density	25 µg / √Hz

#### Interfaces

<b>Code sequence</b>	Increasing, when turning the shaft For clockwise rotation, looking in direction "A" (see dimensional drawing)
<b>Communication interface</b>	HIPERFACE DSL <sup>®</sup>
<b>Initialization time</b>	≤ 500 ms
<b>Measurement external temperature resistance</b>	32-bit value, without prefix (1 Ω) 0 ... 209.600 Ω

#### Electronics

<b>Connection type</b>	Female connector, 8-pin
<b>Supply voltage</b>	7 V ... 12 V
<b>Warm-up time voltage ramp</b>	Max. 180 ms
<b>Current consumption</b>	≤ 300 mA

## Mechanics

<b>Weight</b>	≤ 250 g
---------------	---------

## Ambient data

<b>Operating temperature range</b>	-40 °C ... +115 °C
<b>Storage temperature range</b>	-40 °C ... +125 °C, without package
<b>Relative humidity/condensation</b>	90 %, Condensation not permitted
<b>Resistance to shocks</b>	100 g, 6 ms (according to EN 60068-2-27)
<b>Frequency range of resistance to vibrations</b>	50 g, 10 Hz ... 2,000 Hz (EN 60068-2-6)
<b>EMC</b>	According to EN 61000-6-2, EN 61000-6-4 and IEC 61326-3
<b>Enclosure rating</b>	IP40, with mating plug inserted (IEC 60529-1)

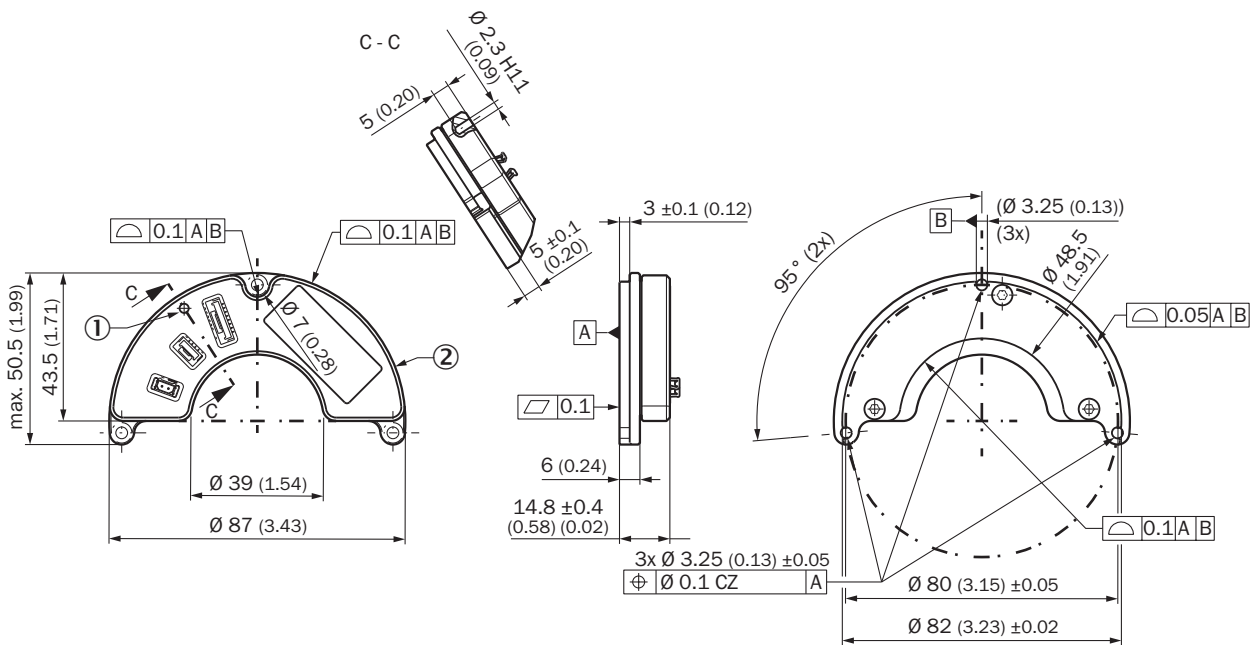
## Certificates

<b>EU declaration of conformity</b>	✓
<b>UK declaration of conformity</b>	✓
<b>ACMA declaration of conformity</b>	✓
<b>China-RoHS</b>	✓
<b>Information according to Art. 3 of Data Act (Regulation EU 2023/2854)</b>	✓

## Classifications

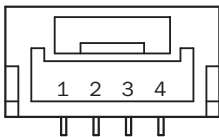
<b>ECLASS 5.0</b>	27270590
<b>ECLASS 5.1.4</b>	27270590
<b>ECLASS 6.0</b>	27270590
<b>ECLASS 6.2</b>	27270590
<b>ECLASS 7.0</b>	27270590
<b>ECLASS 8.0</b>	27270590
<b>ECLASS 8.1</b>	27270590
<b>ECLASS 9.0</b>	27270590
<b>ECLASS 10.0</b>	27273805
<b>ECLASS 11.0</b>	27273901
<b>ECLASS 12.0</b>	27273901
<b>ETIM 5.0</b>	EC001486
<b>ETIM 6.0</b>	EC001486
<b>ETIM 7.0</b>	EC001486
<b>ETIM 8.0</b>	EC001486
<b>UNSPSC 16.0901</b>	41112113

Dimensional drawing



Dimensions in mm (inch)

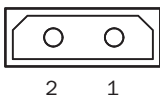
PIN assignment DSL female connector



PIN	Signal
1	Not assigned
2	US+ / DSL+
3	GND/DSL-
4	Not assigned

JST BM04 B-GHS-GB-TBT  
 Device pin assignment

PIN assignment Temperature sensor male connector

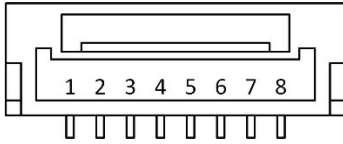


PIN	Signal
1	T+
2	T- / GND

Harwin M80-8820242

PIN	Signal
Device pin assignment	

PIN assignment SHub® / encoder female connector



PIN	Signal
1	Encoder_US+
2	Encoder_GDN
3	Encoder_DSL-
4	Encoder_DSL+
5	Encoder_RxD+
6	Encoder_RxD-
7	Encoder_TxD-
8	Encoder_TxD+
JST BM08B-GHS-TBT (LF) (SN)	
Device pin assignment	

## SICK AT A GLANCE

SICK is one of the leading manufacturers of intelligent sensors and sensor solutions for industrial applications. A unique range of products and services creates the perfect basis for controlling processes securely and efficiently, protecting individuals from accidents and preventing damage to the environment.

We have extensive experience in a wide range of industries and understand their processes and requirements. With intelligent sensors, we can deliver exactly what our customers need. In application centers in Europe, Asia and North America, system solutions are tested and optimized in accordance with customer specifications. All this makes us a reliable supplier and development partner.

Comprehensive services complete our offering: SICK LifeTime Services provide support throughout the machine life cycle and ensure safety and productivity.

For us, that is “Sensor Intelligence.”

## WORLDWIDE PRESENCE:

Contacts and other locations –[www.sick.com](http://www.sick.com)